

[Front Page](#)[Theater](#)[Opera](#)[Archive](#)

SEARCH REVIEWS

ARCHIVE

[June, 2015](#)[May, 2015](#)[April, 2015](#)[February, 2015](#)[January, 2015](#)[October, 2014](#)[September, 2014](#)[August, 2014](#)[July, 2014](#)[June, 2014](#)[May, 2014](#)[April, 2014](#)[March, 2014](#)[February, 2014](#)[January, 2014](#)[July, 2013](#)[June, 2013](#)[May, 2013](#)[February, 2013](#)[January, 2013](#)[November, 2012](#)[October, 2012](#)[September, 2012](#)[July, 2012](#)[June, 2012](#)[May, 2012](#)[March, 2012](#)[January, 2012](#)[November, 2011](#)[October, 2011](#)[September, 2011](#)[August, 2011](#)[July, 2011](#)[June, 2011](#)

Pledge

Michael Van Duzer [Reviews - Theater](#)

Cast.

Catching sight of the title, *Pledge* in the voluminous Hollywood Fringe guide, you could be forgiven for assuming the show is a late-night cult offering, using Greek Life as an excuse to get strapping young men into their tighty whities for a paddling.

Closer inspection reveals that the show is described as “dark and disturbing,” and you might now expect a ripped-from-the-headlines expose of the dangers of fraternity initiation rituals.

Playwright Paul Shoulberg has something very different in mind. His witty and incisively written play is a satiric look at the heart of white male privilege. Recognizing that a fraternity is the perfect incubator for the slickly amoral businessmen and lawyers who populate the upper class in America, he focuses on the next generation as they flex their muscles and learn how to access their power.

If my description sounds a bit dry, Shoulberg’s play is not. Riotously funny and, yes, disturbing, Shoulberg’s corrosive dialog, surprising plot points, and multi-layered characters will both entertain and chill you. Canny direction by Stan Zimmerman focuses the action with laser-like precision and utilizes the somewhat awkward two-tier space with commendable ease. Zimmerman also brings an innate understanding of how to deliver Shoulberg’s pointed barbs for maximum effect.

The cast is terrific. Brendan Robinson’s Sherman is cheeky and compelling as the frat brother who retains a conscience. Alex Dyon is perfection as the smarter-than-anyone-credits-him-for frat president,

SPOTLIGHT

Hollywood Fringe Awarded 10K from National Endowment for the Arts

Hollywood, CA -- The Hollywood Fringe Festival is proud to announce that it has been awarded a National Endowment for the Arts Art Works grant of \$10,000 to support the Festival Scholarships program. The grant stems from more than \$1 million approved by NEA Chairman Jane Chu to fund arts projects and partner with The Art Works category which supports the creation of and presentation of both new and existing work, lifelong learning in the arts, and engagement with the art world through 13 arts disciplines.

“Hollywood Fringe began seven years ago and has grown into a festival reaching to thousands of people,” said Festival Director Ben Hill. “This funding allows us to sustain growth by supporting art programming that is diverse, inclusive, and relevant to the local community. We are honored to have been selected as a recipient.”

[May, 2011](#)

[April, 2011](#)

[March, 2011](#)

[February, 2011](#)

[January, 2011](#)

[December, 2010](#)

[November, 2010](#)

[October, 2010](#)

[September, 2010](#)

[August, 2010](#)

[July, 2010](#)

[June, 2010](#)

[May, 2010](#)

[April, 2010](#)

[March, 2010](#)

[February, 2010](#)

[January, 2010](#)

[June, 2005](#)

[January, 2003](#)

Cam. Daniela Bobadilla makes her scenes count as the Bailey, a girl with a history that requires boundaries, while Kevin Clough makes a goofily endearing Mark.

Running an hour, Pledge feels like the perfect Fringe show: surprising, succinct, and striking.

McCadden Place Theatre June 3 – 25, 2017 www.hfft17.pledge

The Fringe Scholarships program strives to provide a platform for artists to explore most diverse and cutting points-of-view, by offering unique and underserved scholarships to participate in the 2016 Hollywood Fringe Festival. Fringe Scholarships will be awarded to artists whose festival participation will increase attendance and participation in the local Hollywood resident arts community, increase arts participation among ethnically diverse and/or low-income artists, and enrich audience experience through the presentation of unique, underrepresented thematic narratives.

“The arts are all around us, enhancing our lives in ways subtle and obvious, expected and unexpected,” said Fringe Festival Chairman Jane Chu.

“Supporting projects like Fringe Festival offers more opportunities for artists to engage in the arts every day.”

ABOUT HOLLYWOOD FRINGE

The Hollywood Fringe Festival is an annual, open-access, community-derived event celebrating freedom of expression and collaboration. Each June during the Hollywood Fringe, the arts infiltrate the Hollywood neighborhood through equipped theaters, parks, churches, restaurants and unexpected places host hundreds of productions from local, national, and international arts companies and independent performers. The 2016 festival runs June 9th - 26th and features over 1,400 performances across 30 venues.

Participation in the Hollywood Fringe is completely open to all.

uncensored. This free-for-all approach underlines the festival's mission to be a platform for artists without the barrier of a curative body, opening the gates to anyone with a vision, the festival to exhibit the most diverse, cutting-edge points-of-view the world has to offer. Additionally, by creating an environment where artists must self-produce their work, the Fringe motivates its participants to cultivate a spirit of entrepreneurialism in the arts.

Want more information? Contact us at press@hollywoodfringe.org or by visiting the website www.HollywoodFringe.org

Laguna Playhouse Announces Ellen Richard as its Interim Executive Director

May 3, 2016...
Laguna Beach, Calif...Laguna Playhouse Board of Directors announced today that, later this month, Ellen Richard will be joining Laguna Playhouse as its Interim Executive Director. The Playhouse announced late last year that it was undertaking a national search guided by Arts Consulting Group (ACG) for an Executive Director

to succeed Karen Wood who had held this position for the past eight years.

Commenting on the appointment Joe Hanauer and Paul Singarella, Co-Chairmen of the Board of Directors, said "In the midst of our search we encountered this wonderful opportunity to engage Ellen while we continue to seek appropriate long-term leadership. To have found someone with the extraordinary qualifications that Ellen has is thrilling. She is the recipient of six Tony Awards as producer at New York's Roundabout Theatre Company where she was Managing Director. Ellen also has strong successes in supervising the construction of theatres in New York and also in San Francisco at the American Conservatory Theater, a rare and valuable skill set considering the contemplated major remodel and expansion of the Laguna Playhouse." Laguna Playhouse Artistic Director Ann E. Wareham adds, "We are pleased and proud to have Ellen Richard, truly

a rock-star in our field, join us as our interim Executive Director who will help guide the Playhouse during this transition.”

Comments Ellen Richard, “I have quickly grown fond of Laguna Beach and the Playhouse. I embrace this extraordinary opportunity to join one of the country’s top regional theatres at this time in its remarkable 95-year history. I look forward to helping the Playhouse and working with their incredible Board of Trustees and Ann E. Wareham.”

ABOUT ELLEN RICHARD

Ellen Richard served as Executive Director of the American Conservatory Theater in San Francisco from 2010 through 2015.

During her tenure, Ms. Richard negotiated a deal to buy the Strand Theater in tech corridor of Mid-Market San Francisco, helped raise the \$34,000 million to renovate and operate it and steered the design and construction for the project which opened in May of 2015. The complex featured two

performance spaces and has won multiple awards.

She opened the 50 seat Costume Shop Theater, a 49-seat "black box" venue used for the company's Master of Fine Arts students and for shows by other local companies. Ms. Richard was also credited with expanding the company's educational efforts, coming up with programs like the San Francisco Semester, which brings undergraduate acting students to ACT from around the world, and Stage Coach, a community theater mobile unit that reaches into diverse neighborhoods

She was also Executive Director of The Second Stage Theatre in New York City. During her tenure at Second Stage, which began in 2006 (through 2009), she was responsible for the purchase contract of the Helen Hayes Theatre, growth in subscription income of 48 percent, and growth in individual giving of 75 percent, as well as conceptualization of a highly successful

gala format and "Second Generation," a giving program through which donors enable deserving New York City youth to experience live theater. Under Ms. Richard's leadership, Second Stage provided the initial home for the Broadway productions *Everyday Rapture*, *Next to Normal*, and *The Little Dog Laughed*.

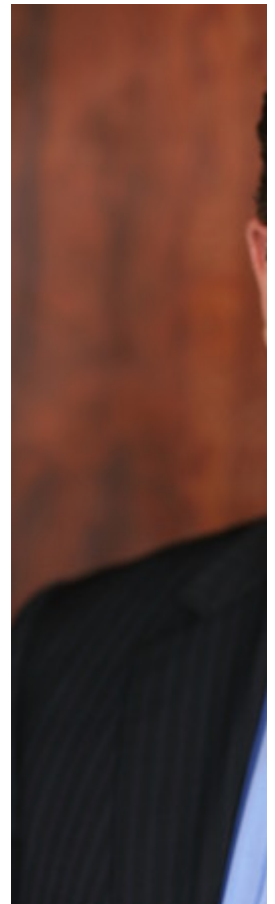
From 1983 to 2005, Ms. Richard enjoyed a rich and varied career with Roundabout Theatre Company. The Roundabout that Ms. Richard joined was a small nonprofit theater company in bankruptcy. By the time she departed as Managing Director, Roundabout had become one of the country's largest and most successful theater companies of its kind, with net assets in excess of \$67 million dollars. Ms. Richard is the recipient of six Tony Awards as producer, for Roundabout productions of *Cabaret* (1998), *A View from the Bridge* (1998), *Side Man* (1999), *Nine* (2003), *Assassins*

(2004), and Glengarry Glen Ross (2005). As producer of more than 125 shows at Roundabout, she had direct supervision of all management and marketing functions. She created Roundabout's "Theatre-PLUS" programs, which include singles, teachers, family, gay and lesbian, wine tasting, and the 7 p.m. "Early Curtain" series, all of which grew to represent more than 10 percent of Roundabout's 40,000 subscribers.

As director of design and construction at Roundabout, Ms. Richard was responsible for more than \$50 million of theater construction for 11 projects. She conceptualized the three permanent Roundabout stages — The Broadway venues of Studio 54 and the American Airlines Theatre, and the Off-Broadway venue The Harold and Miriam Steinberg Center for Theatre. She directed the location search for Cabaret and oversaw the creation of the production's environmental Kit Kat Klub. Prior to

her tenure at Roundabout, Ms. Richard served as business manager of Westport Country Playhouse, theater manager for Stamford Center for the Arts, and business manager for Atlas Scenic Studio. She began her career working as a stagehand, sound designer, and scenic artist assistant.

Los Angeles Drama Critics Announce Nominations for 2015



The Los Angeles Drama announced its nominatic excellence in Los Angel for the year 2015 (Dec. 47th annual LADCC aw: Monday, March 14, 2016 Theater at New Roads & Spielberg Center for Art: Herb Alpert Educational Santa Monica, CA. (The ample street parking.) A be purchased at www.br service fee applies) or a (Purchased tickets will b open at 6:30 p.m. for ou and cash bar. The show Further information will t www.ladramacriticscircle 2016criticsawards@gma

The awards will be hoste accomplished actor, writ whose original music for and starred in at Sacred nominated as one of the Broder co-wrote the acc Keely Live at the Sahara "Louis Prima." Musical d of a 2014 LADCC awarc and one of the busiest n scene, will appear for th

The evening's theme wil UNIQUE." We will be mi theatrical art in general, are like no other art form

One or more plaques wi categories. Two of those been voted plaques. For Alfaro will be honored fo Angeles, produced at TF Museum and The Theat McCulloh Award for Rev originally written betwe presented to Anna Chris Theatre Ensemble at the six special awards will a sponsorship of organiza most grateful.

The LADCC special aw

The Margaret Harford Award for Best Play in theatre goes to Deaf West Theatre. The award is accompanied by a luncheon announced, and will be presented by Sharon Perlmutter.

The Ted Schmitt Award for Best Play in outstanding new play goes to The Normal Heart, originally produced by Signature Theatre. The award is accompanied by a luncheon presented by French, Inc., and will be presented by event producer Bob French.

The Polly Warfield Award for Best Play in small to mid-size theatre goes to The Normal Heart. The award is accompanied by a luncheon funded by the Nederlander Theatre. The award is presented by Circle K member Circle member

The Kinetic Lighting Award for Best Achievement in theatrical design goes to The Normal Heart. The award is accompanied by a luncheon honorarium funded by Kinetic Lighting. The award is presented by Circle K member Circle member

The Joel Hirschhorn Award for Best Musical in musical theatre goes to The Normal Heart. The award is accompanied by a luncheon sponsored by Circle K member David C. Miller. The award is announced by Circle member David C. Miller.

The Milton Katselas Award for Best Achievement in direction goes to The Normal Heart. The award is accompanied by a luncheon presented by Beverly Hills Playhouse, Beverly Hills Playhouse, Vice President Jonas Scrima.

The nominees for the Los Angeles Theatre Awards for theatrical excellence are:

Production

- André & Dorine, Kluge Theatre Center.
- Bootycandy, Celeb
- Enron, The Produc
- Fences, Internatio
- Hit the Wall, The Los Angeles Theatre Center/Tomlin/Jane Wagner Curran Theatre on Broadway Avenue at The Los Angeles Music Center
- Luna Gale, Goodman Theatre, Goodman Theatre Production, Center Theatre Group
- Mojada: A Medea in the Desert, Los Angeles Music Museum and The Theatre Center

and Lawrence Fleischm:

- The Gospel at Colc
at Nate Holden Perform

McCulloh Award for Re
1920 and 1980)

- Anna Christie, Ody
Odyssey Theatre.

Lead Performance

- Angela Bullock in V
Theatre/LA at Atwater V

- Jason Dechert in P
Company.

- Mary Beth Fisher ir
Theatre's World Premier
Group at Kirk Douglas T

- Matthew Hancock i
LGBT Center's Lily Toml
Center and Sixth Avenu
Center.

- Ted Heyck in God's
Production at The Blank

- Lily Knight in A Sm
Company @ Atwater Vil

- Troy Kotsur in Ame
Department of Music, Th
West Theatre at State F

- Emily Lopez in Car
Harris and Jack W. Batn
Michael T. Cohen/Robin
Everett Michaels, in ass
for the Performing Arts a
Performing Arts and Th

- Zoe Perry in Anna
Ensemble at Odyssey T

- Tiffany Royale in Ti
Theatre.

- Michael A. Sheppe
Theatre.

- Jimmi Simpson in T
Atwater Village Theatre.

- Jeff Skowron in *Inti* Shakespeare Festival at the Performing Arts.

- Sabina Zuniga Vare Angeles, J. Paul Getty M Boston Court at Barbara Theater at the Getty Vill:

Featured Performance

- Richard Fancy in *A Theatre Ensemble* at Oc

- Charlotte Gulezian Angeles LGBT Center's Cultural Arts Center and Angeles LGBT Center.

- Charlie Hofheimer at Mark Taper Forum.

- Tracie Lockwood in *Machine Theatre* at The

- Elyse Mirto in *Figar*

- Martin Rayner in *O Theatre Ensemble* and f

- Bryce Ryness in *M Shakespeare Company Theatre Group* at Ahmai

- Michael A. Sheppe Theatre at The Lex.

Ensemble Performanc

- André & Dorine, *Kl Theatre Center*.

- Bootycandy, *Celeb*

- Hit the Wall, *The Lc Tomlin/Jane Wagner Cu Avenue* at The Los Ange

- Luna Gale, *Goodm Production, Center Thea Theatre*.

- Mojada: *A Medea i Museum and The Theat and Lawrence Fleischm:*

Solo Performance

- Orson Bean in Safe Orson Bean, Pacific Res
- Monica Piper in No Theatre at The Braid.
- John Douglas Thor Waldorf, The Long Whal Company Production at Performing Arts.

Direction

- Jessica Kubzansky Angeles, J. Paul Getty M Boston Court at Barbara Theater at the Getty Vill:
- Jaime Robledo, As Sacred Fools Theatre C Theatre.
- Kim Rubinstein, An Ensemble at Odyssey T
- Ken Sawyer, Hit th Center's Lily Tomlin/Jan and Sixth Avenue at The
- August Viverito, En at The Lex.

Writing

- Rebecca Gilman, L World Premiere Product Kirk Douglas Theatre.
- Nick Jones, Trevor, Village Theatre.
- Robert O'Hara, Bor The Lex.
- Lucy Prebble, Enrc The Lex.
- Micah Schraft, A D Company at Elephant TI

Writing (Adaptation)

- Luis Alfaro, Mojada Paul Getty Museum and Barbara and Lawrence f Villa.

Musical Score

- Stu Barker, Tristan Coast Repertory.
- Jake Broder, Mirav Company at Sacred Foc
- Tim Minchin, Matilc Shakespeare Company Theatre Group at Ahmai
- Anna Waronker an The Los Angeles LGBT Wagner Cultural Arts Ce Los Angeles LGBT Cent

Music Direction

- Stu Barker, Tristan Coast Repertory.
- Brian P. Kennedy, (Harris and Jack W. Batn Michael T. Cohen/Robin Everett Michaels, in ass for the Performing Arts a Performing Arts and The
- Abdul Hamid Roya Ebony Repertory Theatr Arts Center.
- Julie Wolf, Girlfrien Louisville Production, Ce Douglas Theatre.

Choreography

- Christopher Gattell Productions under the d at Hollywood Pantages
- Josh Rhodes, Rod Cinderella, Robyn Good Koos, Edward Walson, \ The Araca Group, Carol Peter May/Sanford Robe Schmidt, and Blanket F Group at Ahmanson The
- Dana Solimando, E the Performing Arts & M Mirada Theatre for the I
- Angela Todaro, Am Company at The MET T

Set Design

- Tom Buderwitz, The Repertory and The Pasadena Playhouse.
- Mimi Lien, Appropriation at Mark Taper Forum.
- Don Llewellyn, Fenway.
- Bill Mitchell, Tristar South Coast Repertory.

Lighting Design

- Martin Labrecque, Cirque du Soleil at Dodgson Center.
- Tom Ontiveros, My Boston Court.
- Matt Richter, Hit the Center's Lily Tomlin/Janet and Sixth Avenue at The Pasadena Playhouse.
- Malcolm Rippeth, The South Coast Repertory.

Costume Design

- Angela Balogh Cali.
- Jessica Ford, The Pasadena Playhouse in association with the Yale Repertory Theatre at the Geffen Playhouse.
- Philippe Guillotel, Cirque du Soleil at Dodgson Center.
- Wade Laboissonnie, The Pasadena Playhouse in association with the Yale Repertory Theatre at The Pasadena Playhouse.
- William Ivey Long, Cinderella, Robyn Gooden, Edward Walson, The Araca Group, Carol Peter May/Sanford Robe Schmidt, and Blanket F Group at Ahmanson Theatre.

Sound Design

- Gregory Clarke, Tristar South Coast Repertory.

- Bruno Louchouarn, Angeles, J. Paul Getty M Boston Court at Barbara Theater at the Getty Vill;
- Jaime Robledo, As Sacred Fools Theatre C Theatre.
- John Zalewski, My Boston Court.

CGI/Video

- Anthony Backman the God of Comics, Sac Sacred Fools Theatre.
- Nicholas Santiago, Machine Theatre at The

Specialty

- Gieselle Blair, Figa and makeup)
- Garbiñe Insausti, A at The Los Angeles The
- Aviva Pressman, A Comics, Sacred Fools T Fools Theatre. (Live art
- Jim Steinmeyer, Ca Harris and Jack W. Batn Michael T. Cohen/Robin Everett Michaels, in ass for the Performing Arts a Performing Arts and Th design)

Every effort has been m for our nominees. We re Any that come to our att LADCC website, in the € applicable) on a recipier

The Los Angeles Drama 1969. It is dedicated to and to the encourageme

in Greater Los Angeles.
consisted of:

Pauline Adamek, ArtsBe

Paul Birchall, Stage Rav

Shirle Gottlieb, Gazette
StageHappenings.com

Margaret Gray, Los Ang

Hoyt Hilsman, The Huffi

Deborah Klugman, LA V
Raw

Jenny Lower, Stage Rav

Jon Magaril, CurtainUp.c

Dany Margolies, ArtsInL
News Group)

Myron Meisel, Stage Ra

Terry Morgan, TalkinBro

Steven Leigh Morris, LA

David C. Nichols, Los Ai

Sharon Perlmutter, Talki

Melinda Schupmann, St

Jonas Schwartz-Owen, `
ArtsinLA.com

Madeleine Shaner, Park

Don Shirley, LA Observ

Les Spindle, Frontiers, E

Bob Verini, Variety, Artsi

Neal Weaver, Stage Rav

Citations by productio

Hit the Wall (Los Angele

Mojada: A Medea in Los

Tristan & Yseult (South i

Astro Boy and the God c

Bootycandy (Celebrator

Luna Gale (Kirk Douglas

André & Dorine (Los Angeles Music Center) 1

Anna Christie (Odyssey Theatre) 1

Carrie the Musical (La Mirada Center) 1

Arts and Los Angeles Theatre Center) 1

Enron (The MET Theatre) 1

Fences (International Center for the Performing Arts) 1

Figaro (A Noise Within) 1

A Permanent Image (Rockwell Center) 1

Kurios—Cabinet of Curiosities (Theatre) 1

Matilda the Musical (Ahrmstrong Theatre) 1

My Barking Dog (Theatre) 1

Rodgers + Hammerstein Theatre) 2

The Gospel at Colonus (Center) 2

Trevor (Atwater Village Theatre) 1

A Dog's House (Elephant Theatre) 1

American Buffalo (California State Theatre) 1

American Idiot (MET Theatre) 1

A Small Fire (Echo Theatre) 1

Appropriate (Mark Taper Forum) 1

Awake and Sing! (Odyssey Theatre) 1

Bent (Mark Taper Forum) 1

Billy Elliot (La Mirada Center) 1

Girlfriend (Kirk Douglas Theatre) 1

God's Man in Texas (Blanchard Theatre) 1

Into the Woods (Wallis Annenberg Theatre) 1

Miravel (Sacred Fools Theatre) 1

Newsies (Hollywood Pantages Theatre) 1

Not That Jewish (The Broadway Theatre) 1

Oedipus Machina (Odyssey Theatre) 1

Picnic (Antaeus Theatre) 1

Safe at Home: An Evening with the Resident Theatre) 1

Satchmo at the Waldorf

The Best Of Enemies (C

These Paper Bullets! (G

The Whipping Man (Sou
Playhouse) 1

Vietgone (South Coast F
Award

Watching O.J. (Atwater 1

Waterfall (Pasadena Pla

